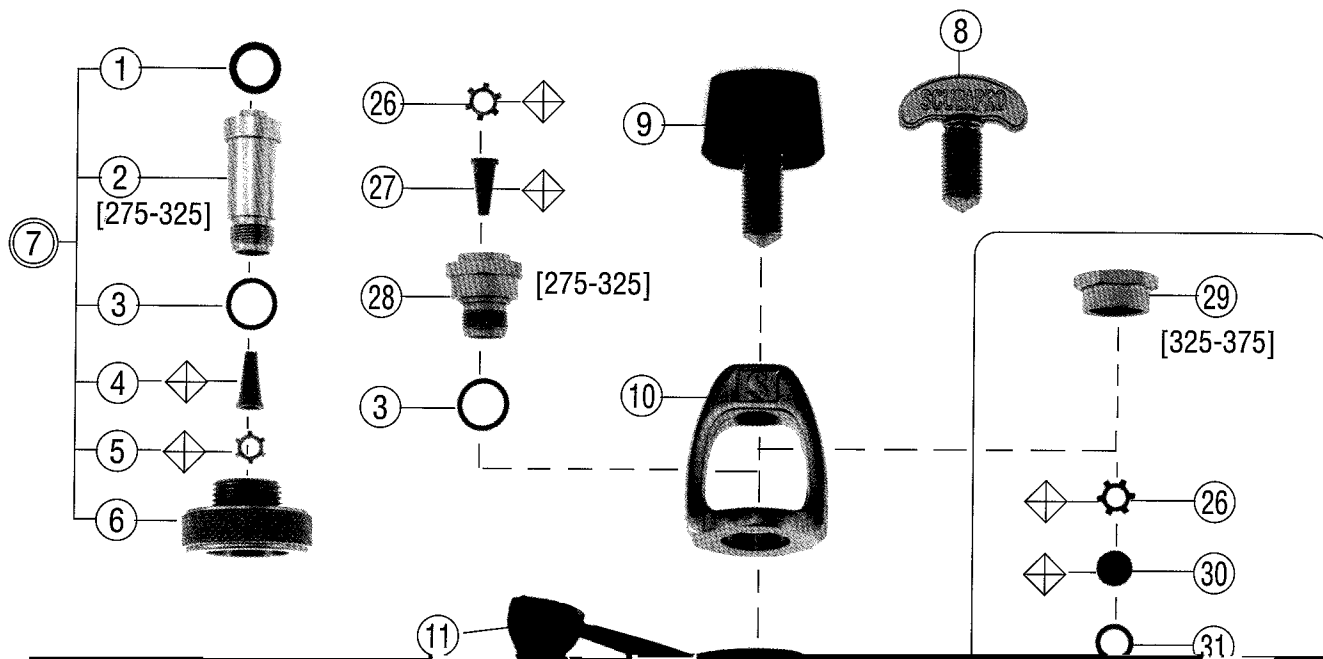


SCUBAPRO

Technical Service Schematic

MK 3 FIRST STAGE #10-043-000
#10-103-000

Date 12/97 Revision E
Annual Repair Parts Kit #10-043-041
#10-103-041



SCUBAPRO

Technical Service Schematic

**MK 3 FIRST STAGE #10-043-000
#10-103-000**

Parts

Date 12/97 Revision E

Annual Repair Parts Kit #10-043-041

#10-103-041

#	QTY	PART #	DESCRIPTION	COST
1	1	1	01-050-193 O-RING, DIN	
2	1	1	10-103-114 RETAINER, DIN, 300 BAR	
3	1	1	01-050-380 O-RING, DIN ADAPTER, AMBER	
4	1	1	01-028-109 FILTER, CONICAL	
5	1	1	01-073-108 RETAINER, STAR	
6	1	1	10-105-118 KNOB, DIN, 300 BAR	
○	1	1	10-043-030 KIT, DIN, 300 BAR, MK2, MK3, MK200	
*□	1	1	10-101-132 YOKE SCREW, (9/16) OLD STYLE	
	1	1	10-200-008 YOKE SCREW ASSY, (9/16)	
	1	1	10-101-131 YOKE, (9/16)	
	1	1	10-101-211 INLET PROTECTOR	
	1	0	10-103-110 BODY	
*	3	3	01-060-103 WASHER	
●	1	1	01-060-214 WASHER, 3000 PSI SERVICE	
	1	1	10-043-002 SPRING	
	1	1	10-200-107 SEAT, HP	
	1	1	01-050-127 O-RING, PISTON SHAFT, AMBER	
	1	1	10-103-102 PISTON	
	1	1	01-050-168 O-RING, PISTON, LARGE, AMBER	
	1	1	10-103-104 CAP, SPEC	
	2	3	01-050-132 O-RING, LP PLUG, BLUE	
*	2	3	10-101-104 LP PLUG, (3/8-24)	
	2	3	10-101-006 PLUG, LP, (3/8-24) WITH O-RING	
	1	0	01-050-138 O-RING, HP PLUG (BLUE)	
	1	0	10-101-139 HP PLUG, (7/16-20)	
	1	0	10-101-039 PLUG, HP, (7/16-20) WITH O-RING	
	1	1	01-073-101 RETAINER, FILTER	
	1	0	01-028-109 FILTER, CONICAL	
	1	0	10-102-105 YOKE RETAINER	
*□	0	1	10-103-112 YOKE RETAINER, OLD STYLE	
□	0	1	01-028-101 FILTER, FLAT	
□	0	1	01-050-144 O-RING, BLUE	
□	0	1	10-103-105 BODY, OLD STYLE	
MK3 #10-043-000				
MK3 #10-103-000				

Technical Information:

This first stage may be similar in appearance to the MK200 and MK2 first stages, and shares some common components. Be sure to properly identify the first stage prior to service and use the appropriate schematic to avoid mixing incompatible parts.

Item #8 note: The older configuration MK3 may have smaller thread yoke and yoke screws. These are no longer available as replacements and are only approved to 2475 psi service. They should be upgraded with 9/16 thread yokes Items #9 and 10 for 3000 psi service. This upgrade is not covered as a warranty item.

Special Engineering Notes:

Maximum 3 washers #01-060-103 are used to adjust intermediate pressure to specified limits. These washers for 2475 psi service only. Use washer p/n 01-060-214 for 3000 psi service. Refer to engineering bulletin #170A.

Item #21 note: The 3/8-24 LP Plug is also used as the HP Plug on the older configuration 10-103-000.

Items #29-32 reflect the older configuration MK3 assy, p/n 10-103-000.

Legend (prices subject to change without notice)

- Not Shown ◇ Dynamic O'Ring Replace Annually
- Optional Item ◊ Annual Replacement
- ▲ Limited Warranty [] Torque In Inch Pounds
- Older Configuration * See Note